

CAT 6E S/FTP

OVERALL BRAIDING (SHIELDED) / FOILED TWISTED PAIR

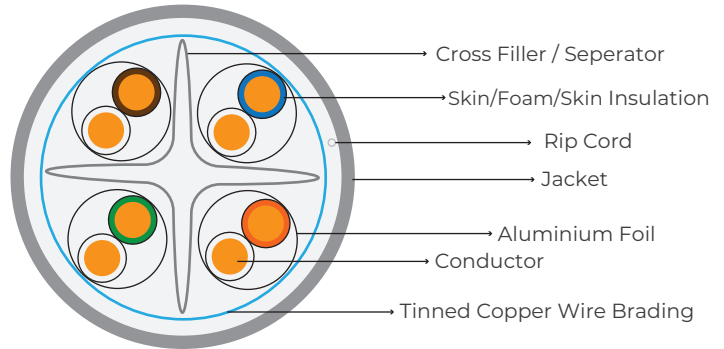
Product Description

CAT 6E S/FTP, 4 Pair, 23 AWG (Solid) Bare Copper, Skin/Foam/Skin (Foam PE), Foiled Twisted Pairs, Overall Tinned Copper Wire Braid Shield, Jacket: Indoor - PVC/LSZH, Outdoor - PE

Technical Specifications

Product Overview

Suitable Applications: 10 Gigabit Ethernet, Power over Ethernet, voice and broadband video transmissions, Class EA & F structured wiring cable systems, Data transmission speed 10Gbps



Construction Details

Conductor

Element	Size	Stranding	Material	No. of Pairs	No. of Elements
Pair(s)	23 AWG	Solid	Bare Copper	4	8

Insulation

Material	Color Code
Skin/Foam/Skin (Foam PE)	White & Blue, White & Orange, White & Green, White & Brown

Inner Shield

Element	Shield Type	Material
Individual Shielded Pair	Tape	Aluminium+Polyester

Cross Filler / Separator	Yes
--------------------------	-----

Overall Shield

Shield Type	Material
Braid	Tinned Copper (TC)

Outer Jacket

Material	Rip Cord
Indoor: PVC / LSZH	Yes
Outdoor: PE	-

Electrical Characteristics

Electricals

Max. Conductor DC Resistance	Insulation Resistance	Dielectric Strength	Characteristics Impedance
@ 20°C: 9.5 Ohm/100m	5000 Mohm/km @ 500V D.C.	1.0 kV DC for 1 Minute	100 ± 15 Ohm
Resistance Unbalance (With in a pairs)	Resistance Unbalance (Between pairs)	Capacitance Unbalance (Pair to Ground)	
2% Max	5% Max	1600 pF/km @ 1000Hz	

CAT 6E S/FTP

OVERALL BRAIDING (SHIELDED) / FOILED TWISTED PAIR

Delay

Frequency	Delay Skew	Nom. Velocity of Propagation Range	Fluke Test
500-550 MHz	45 ns/100m	67% to 70%	100 MTR

Mechanical Characteristics

Temperature

Operating	Installation	Storage
- 20°C to +70°C	0°C to +50°C	- 20°C to +80°C

Standards and Compliance

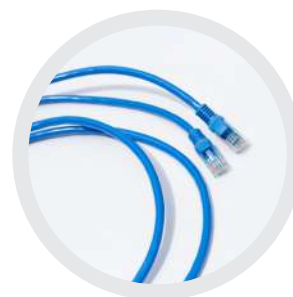
Flammability Test	IEC 60332-1 (Applicable for LSZH sheathed cable)
Data Category	Category 6E
TIA/EIA Compliance	ANSI/TIA- 568.2-D
ISO/IEC Compliance	ISO/IEC 11801-1
IEC Compliance	IEC - 61156-5
BS EN Compliance	BS EN 50173
EN Compliance	EN 50288-5-2
Wire Mapping Standard	568 A/568 B

Packing

Packing type	Length
Drum	305 MTR
MessCoil	305 MTR
Meter Marking	Reverse

Patch Cord

RJ 45	CAT 6A
Packing Length	1, 3, 5 MTR



Standard Outer Sheath Colour

Indoor - PVC	Grey
Indoor - LSZH	Blue
Outdoor - PE	Black

Note:

The outer sheath colour will be customized to meet the customer's preferences.